



Component Wizard™

Automatically generates TMS320™ DSP Algorithm
Standard source code for eXpressDSP™!

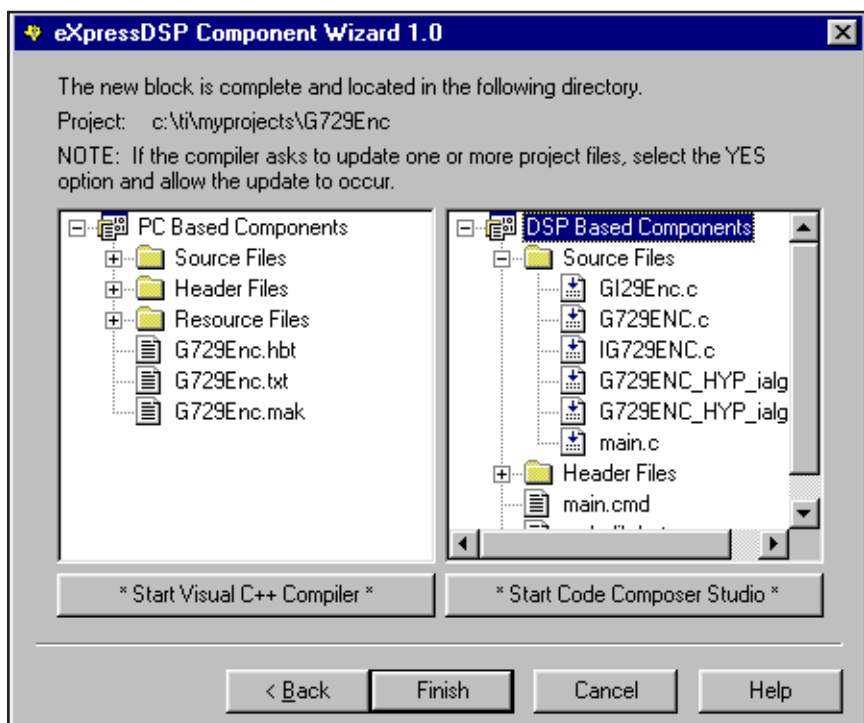


If you're interested in making components for eXpressDSP using the DSP Algorithm Standard you should consider the Component Wizard

- Save time and effort
- Increase reliability
- Increase likelihood of compliance the first time!

Reduce the learning curve associated with moving to the TMS320 DSP Algorithm Standard; by reducing the learning curve, you will dramatically reduce your development time and cost.

This low-cost tool automates much of the work associated with creating a robust new component which adheres to the standard!



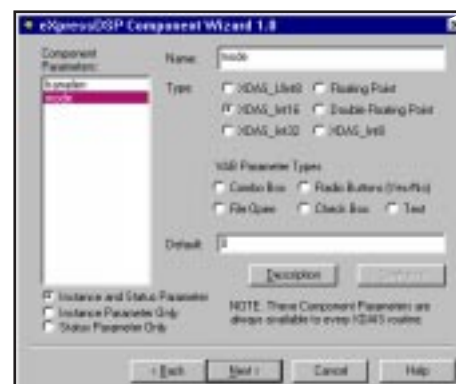
Standardize your algorithm quickly using the eXpressDSP Component Wizard; simply step through the wizard to create the source code to insert your function

For more detailed information, please contact:

Hyperception, Inc.
9550 Skillman LB 125 * Dallas, TX 75243
Voice: (214) 343-8525 Fax: (214) 343-2457
E-Mail: info@hyperception.com
www.hyperception.com



New components may be created using the eXpressDSP Component Wizard tool and Code Composer Studio™ (CCS) environment



Eliminate much of the detail-oriented work associated with creating a standardized algorithm



The Function Prototype Wizard makes adding functions that adhere to the standard specification a snap!