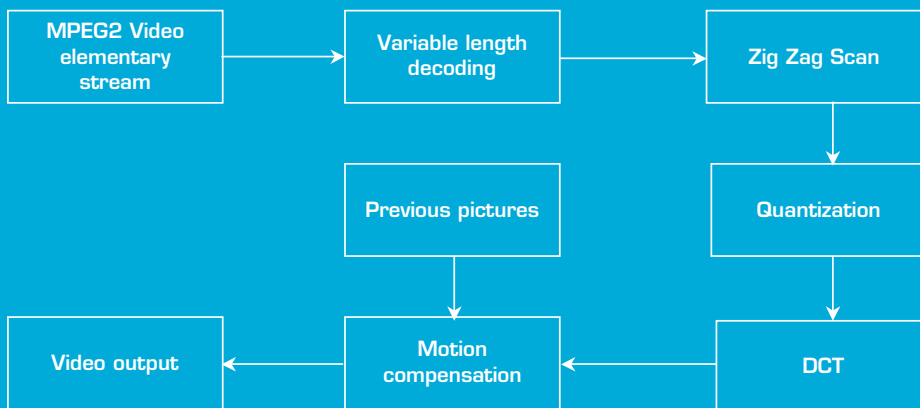


# MPEG-2 decoder

## Audio & Video for DSP



MPEG-2 algorithm  
for video  
applications

## Hardware

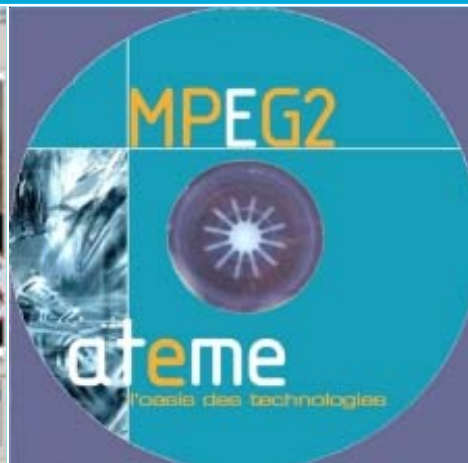
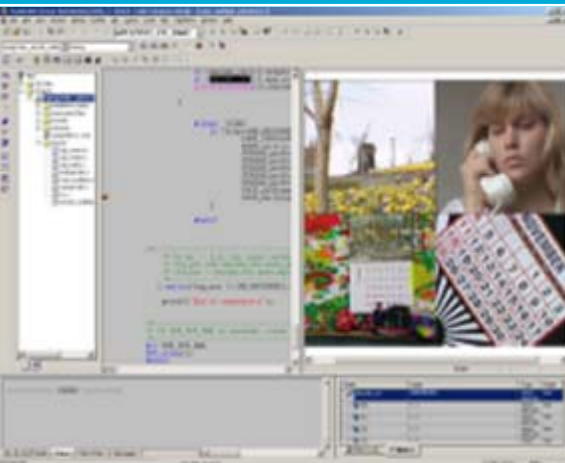
- Imaging Evaluation Kit products
- Dedicated to A/V algo evaluation
- Specific hardware integration



*Imaging Evaluation Kit*

## Project Support



- Hotline: library use support
- Application engineer assistance
- Library customization
- Training
- Specific H/W or S/W designs



MPEG-2 is one of the most common standard used in video application such as Digital Television, Set Top Box, DVD player etc,...

ATEME offers a video elementary stream decoder based on DSP platform. It provides high performance (optimized software, re-entrant algorithm) with cost reduction. Moreover ATEME offers a complete MPEG-2 development platform (Hardware/Software) for video applications.

# Performance

Bit Stream/Format	Bit rate	ms/frame	Decode		
			C6415@600	C6203@300	C6211@150
 "BBC" CIF PAL 352 x 288	1.5 Mb/s	ms/frame	2.8	10	18
 "Aquarium" FULL PAL 720 x 576	2 Mb/s	ms/frame	7.6	34	68
	4 Mb/s	ms/frame	9.7	38	77
	8 Mb/s	ms/frame	10	39	78
 "Boxing" FULL NTSC 720 x 480	15 Mb/s	ms/frame	12.4	45	96
	15 Mb/s	ms/frame	11.9	N/A	N/A

## KEY FEATURES

- C6000 platforms
- eXpress DSP compliant
- Hardware support
- Performance
- Flexibility
- Upgradeability
- Plug & Play technology demos

## APPLICATIONS

- Set Top Box
- Digital Television
- Broadcast local Network
- In Flight Entertainment



## Features

### Target

- DSP C62x, C64x (Texas Instruments)

### eXpress DSP compliant

- IALG (Interface ALGo) features
- IDMA (Interface DMA)

### Standard

- MPEG-2 MP@ML
- ISO/IEC 13818-2

### Input

- Bit rate up to 15 Mbps - circular buffer
- PAL or NTSC elementary video streams

### Output

- YUV 4:2:0 in frame format
- 4 frames output buffer

### Hardware specifications

- No specific constraints needed on hardware design

### Footprint

	Program	Const	Data
<b>C6200</b>	62 kB	9.5 kB	200 B
<b>C6400</b>	82 kB	16 kB	144 B

### CD contents:

- MPEG-2 decoder library for C6200
- MPEG-2 decoder library for C6400
- User's manual
- Application samples

## Related products

### MPEG-2:

- Video Encoder
- Audio Codec

### MPEG-2 Guide:

The purpose of the MPEG-2 Guide is to provide people interested in MPEG-2 with all the preliminary documentation they need to fulfill the first steps of a new project.



### Hardware platforms:

- Imaging Evaluation Kits: IEK C64x, IEK C6211
- Digital Media Evaluation Kit: DMEK 6414, DMEK 642

### Emulation:

- aDICE710

To get updated benchmarks visit :  
<http://www.ateme.com>  
<http://extranet.ateme.com>

All trademarks property of their respective owner.  
 © ATEME 2003 - All rights reserved  
 ref ATE 3080-COM1-1.1  
 Information presented here is not contractual.  
 AteMe may change product characteristics without prior notice.