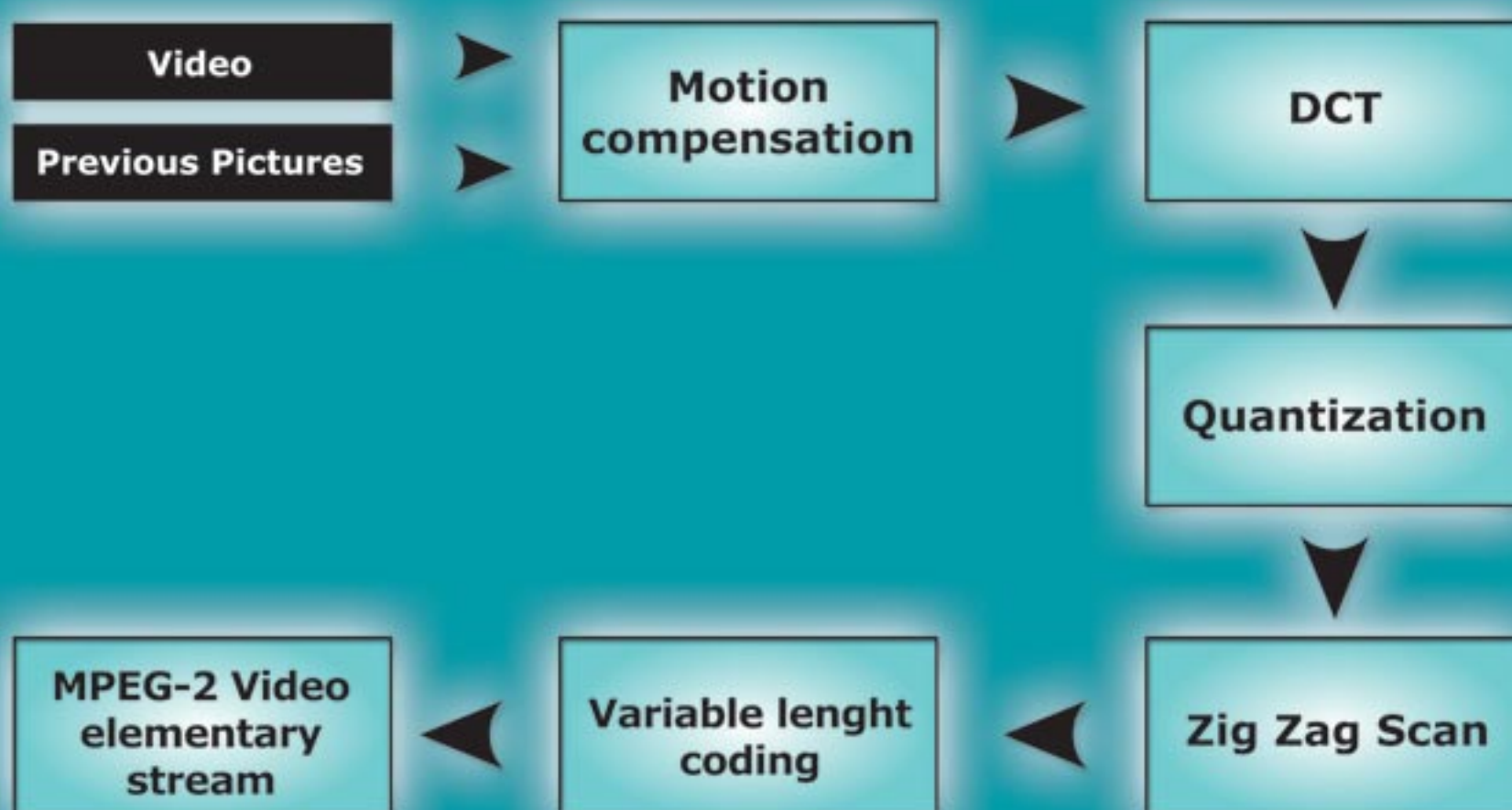


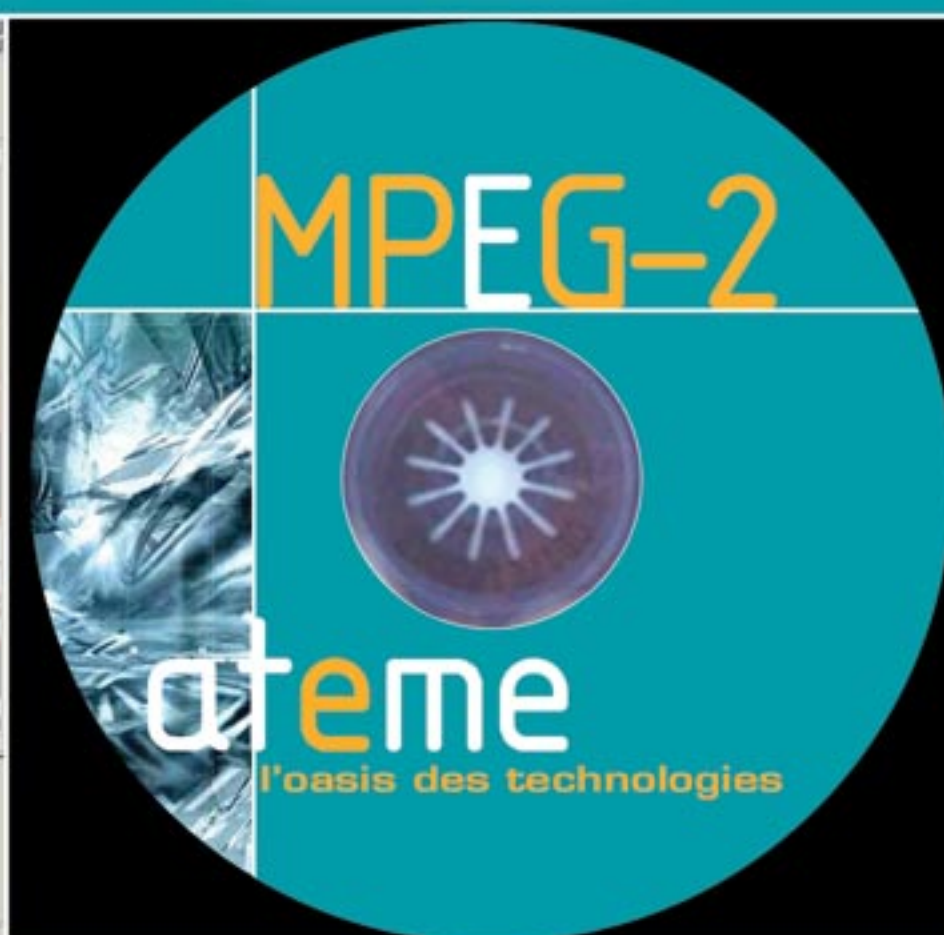
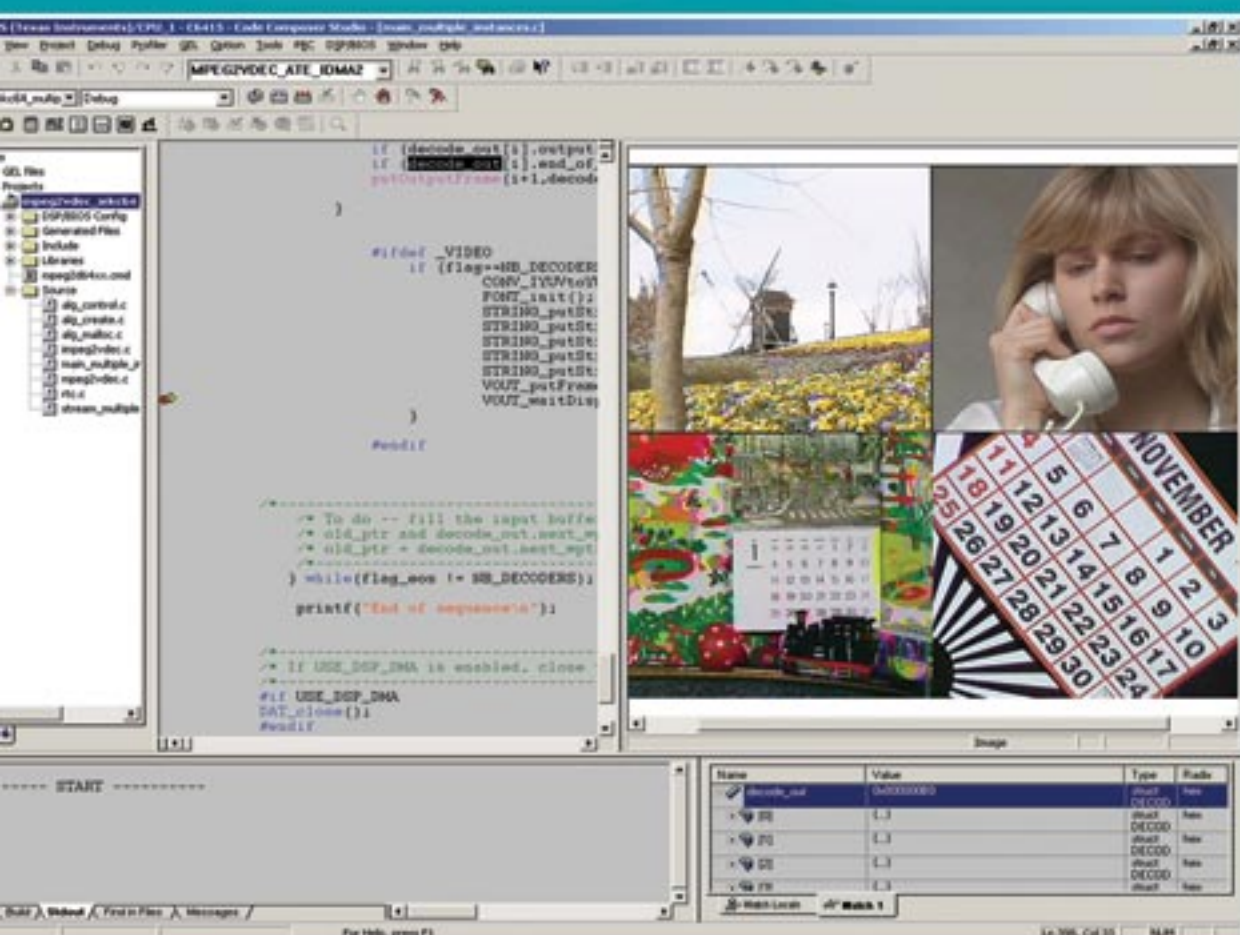
MPEG-2 encoder

Audio & Video for DSP



HARDWARE

- Imaging Evaluation Kit*
- Dedicated to A/V algorithms evaluation
- Specific Hardware Integration



PROJECT SUPPORT

- Hotline: Library use support
- Application engineer assistance
- Library customization
- Training
- Customized H/W or S/W designs

MPEG-2 is one of the most widespread standard used in video application such as Digital Television, Set Top Box, DVD Player, etc ... AteME's MPEG2 for DSP is designed with quality in mind and optimized for maximum performance.


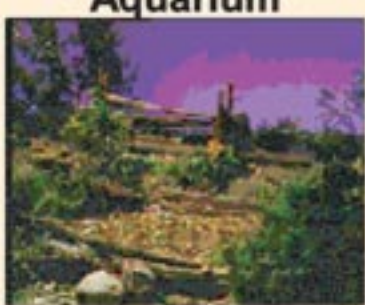


To help you with your application design, ATEME also offers:

- Complete development platforms design to speed up your time to market
- Engineering services to adapt our product or build solutions from the bottom up to fit your specific needs.



*Imaging Evaluation Kit

Performance

Bit Stream/Format			Bit rate	C6416@600MHz CPU Load
"Aquarium" 	FULL PAL 720 x 576	Encoder configuration: GOP size: 15 GOP config.: IP	3 Mb/s	67 %
			5 Mb/s	70 %
			8 Mb/s	73 %
			15 Mb/s	76 %
"Aquarium" 	FULL PAL 720 x 576	Encoder configuration: GOP size: 15 GOP config.: IBBP	3 Mb/s	75 %
			5 Mb/s	77%
			8 Mb/s	79 %
			15 Mb/s	81 %
"Boxing" 	FULL NTSC 720 x 480	Encoder configuration: GOP size: 15 GOP config.: IP	3 Mb/s	69 %
			5 Mb/s	72 %
			8 Mb/s	74 %
			15 Mb/s	77 %
"Boxing" 	FULL NTSC 720 x 480	Encoder configuration: GOP size: 15 GOP config.: IBBP	3 Mb/s	79 %
			5 Mb/s	80 %
			8 Mb/s	81 %
			15 Mb/s	83 %

Film example:	Bit-rate GOP size Resolution	GOP Configuration CPU Load	GOP Configuration CPU Load
Matrix (chapter 29)			
Platform: IEKC6416@600MHz	5Mb/s 15 720 x 576	IP 70%	IBBP 80%

KEY FEATURES

- C6400 platforms
- Hardware support
- Performance
- Flexibility
- Upgradeability
- Plug & Play technology demos

APPLICATIONS

- Set Top Box
- Digital Television
- Broadcast local Network
- In flight Entertainment



Features

Target

- DSP C64x (Texas Instruments)

Standard

- MPEG-2 MP@ML
- ISO/IEC 13818-2

Input

- YUV 4:2:0 in frame format

Output

- Compliant bitstream to ISO/IEC 13818-2

Hardware specifications

- No specific constraints needed on hardware design

Footprint

	Program	Data
C6400	140 kB	3.9 MB

CD contents:

- MPEG-2 encoder library for C6400
- User's manual
- Application samples

Related products

MPEG-2:

- Video Decoder
- Audio Codec

MPEG-2 Guide:

The purpose of the MPEG-2 Guide is to provide people interested in MPEG-2 with all the preliminary documentation they need to fulfil the first steps of a new project

Hardware platforms:

- Imaging Evaluation Kit: IEK C64x
- Digital Media Evaluation Kit: DMEK 6414, DMEK 642

Emulation:

- aDICE710

All trademarks property of their respective owner. ATEME may change product characteristics without prior notice.

© ATEME 2003 – ref ATE3080-COM2-1.2
All rights reserved



ATEME - 26 Burospace, route de Gisy - 91570 BIEVRES - FRANCE
Tel: 33 (0) 1.69.35.89.89 - Fax: 33 (0) 1.60.19.13.95

For more information, visit our website <http://www.ateme.com/products/> or contact our products team: products@ateme.com.