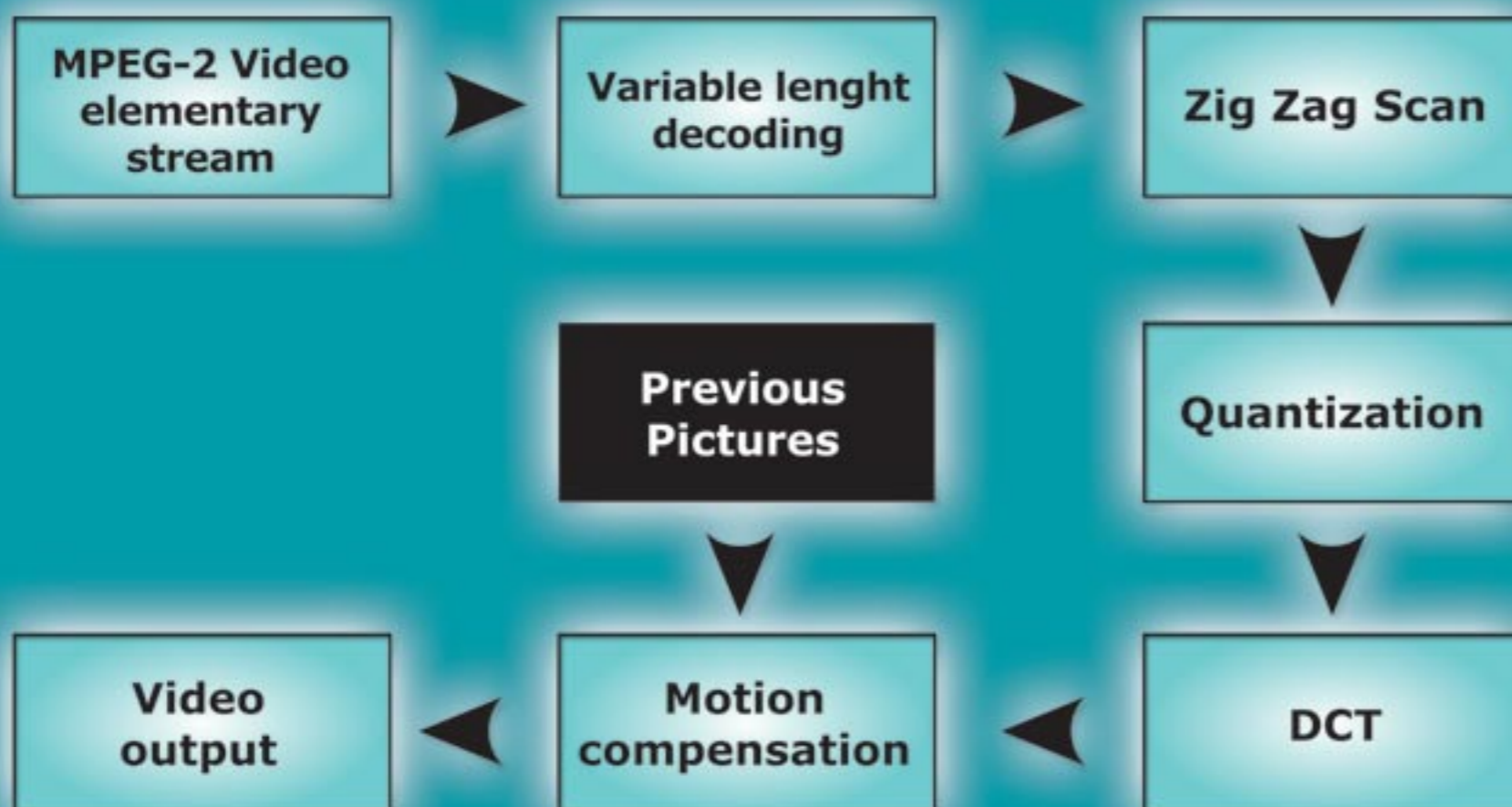


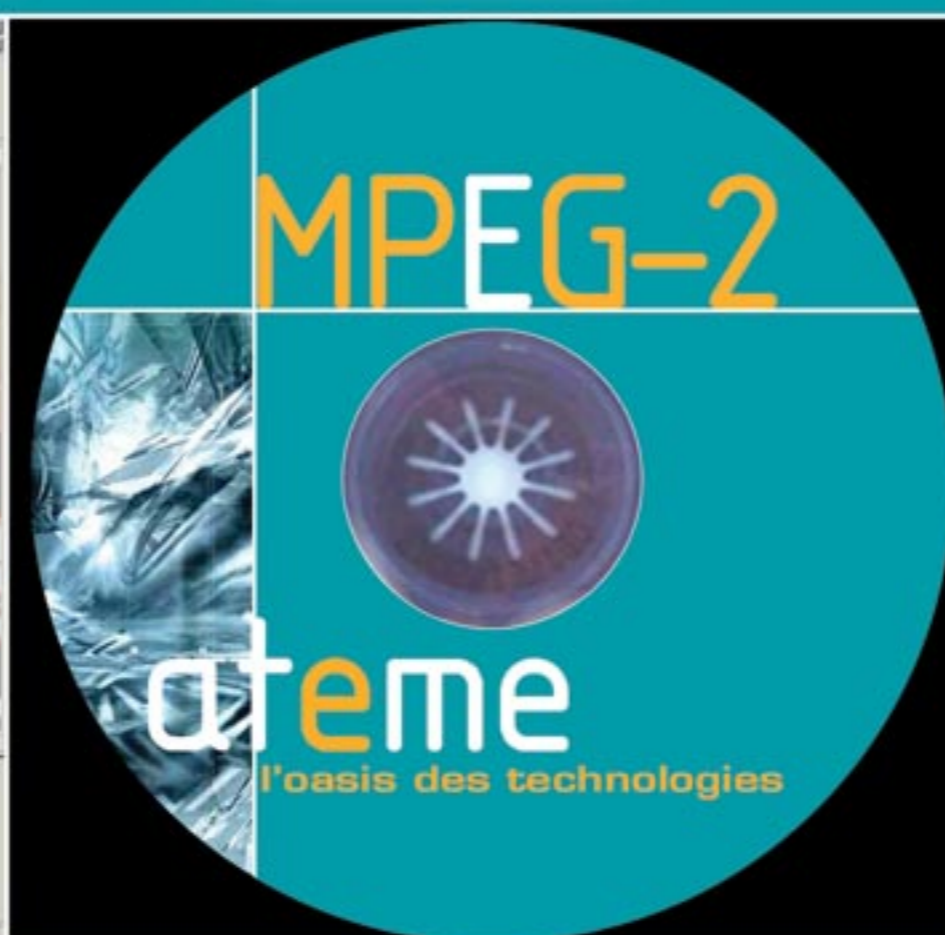
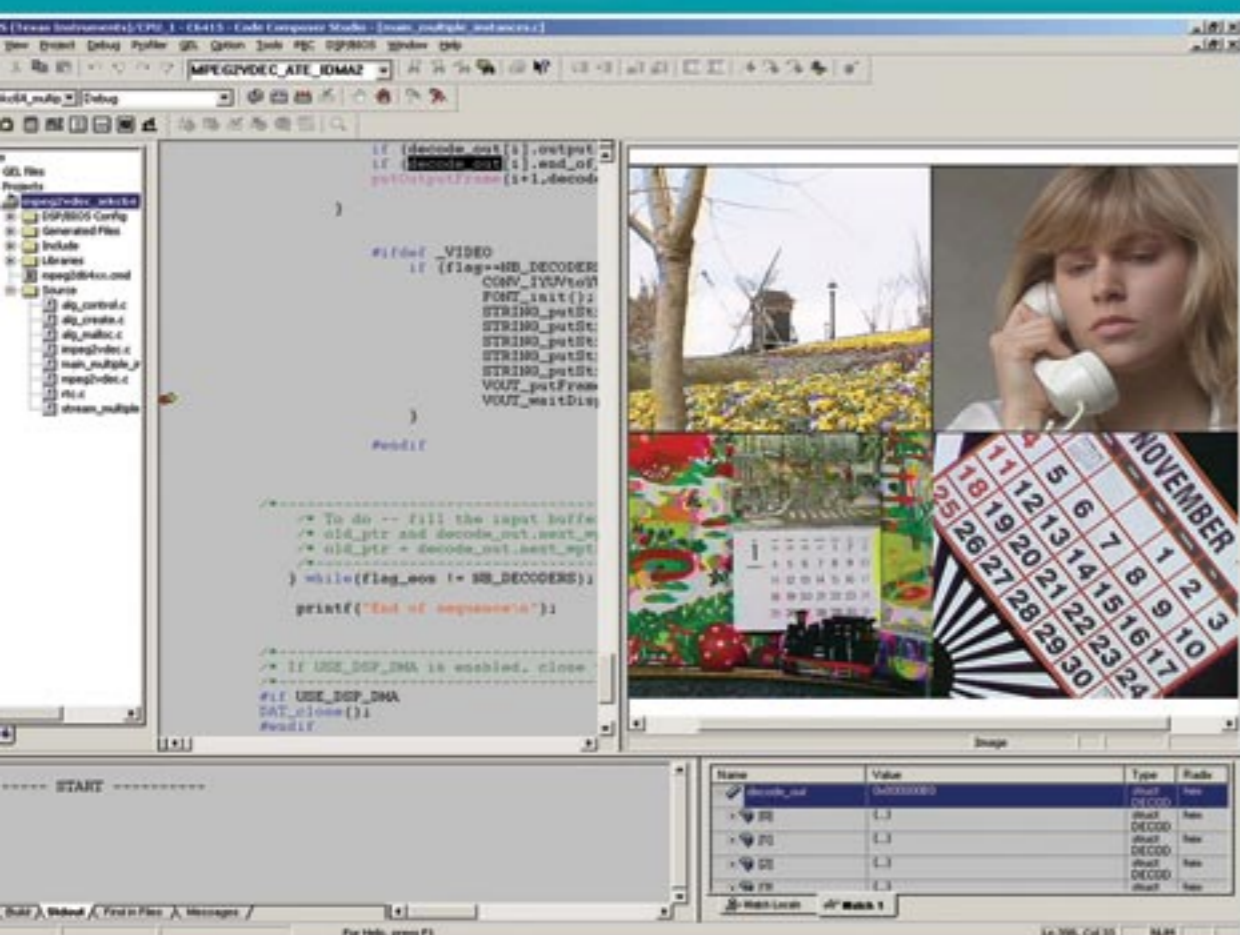
MPEG-2 decoder

Audio & Video for DSP



HARDWARE

- Imaging Evaluation Kit*
- Dedicated to A/V algorithms evaluation
- Specific Hardware Integration



PROJECT SUPPORT

- Hotline: Library use support
- Application engineer assistance
- Library customization
- Training
- Customized H/W or S/W designs

MPEG-2 is one of the most widespread standard used in video application such as Digital Television, Set Top Box, DVD Player, etc ... AteME's MPEG2 for DSP is designed with quality in mind and optimized for maximum performance.




To help you with your application design, ATEME also offers:

- Complete development platforms design to speed up your time to market
- Engineering services to adapt our product or build solutions from the bottom up to fit your specific needs.



*Imaging Evaluation Kit

Performance

Bit Stream/Format	Bit rate	ms/frame	Decode		
			C6415@600	C6203@300	C6211@150
 <p>"BBC" CIF PAL 352 x 288</p>	1.5 Mb/s	ms/frame	2.8	10	18
 <p>"Aquarium" FULL PAL 720 x 576</p>	2 Mb/s	ms/frame	7.6	34	68
	4 Mb/s	ms/frame	9.7	38	77
	8 Mb/s	ms/frame	10	39	78
	15 Mb/s	ms/frame	12.4	45	96
 <p>"Boxing" FULL NTSC 720 x 480</p>	15 Mb/s	ms/frame	11.9	N/A	N/A

KEY FEATURES

- C6000 platforms
- eXpress DSP compliant
- Hardware support
- Performance
- Flexibility
- Upgradeability
- Plug & Play technology demos

APPLICATIONS

- Set Top Box
- Digital Television
- Broadcast local Network
- In flight Entertainment



Features

Target

- DSP C62x, C64x (Texas Instruments)

eXpress DSP compliant

- IALG (Interface ALGO) features
- IDMA (Interface DMA)

Standard

- MPEG-2 MP@ML
- ISO/IEC 13818-2

Input

- Bit rate up to 15 Mbps - circular buffer
- PAL or NTSC elementary video streams

Output

- YUV 4:2:0 in frame format
- 4 frames output buffer

Hardware specifications

- No specific constraints needed on hardware design

Footprint

	Program	Const	Data
C6200	62 kB	9.5 kB	200 B
C6400	82 kB	16 kB	144 B

CD contents:

- MPEG-2 decoder library for C6200
- MPEG-2 decoder library for C6400
- User's manual
- Application samples

Related products

MPEG-2:

- Video Encoder
- Audio Codec

MPEG-2 Guide:

The purpose of the MPEG-2 Guide is to provide people interested in MPEG-2 with all the preliminary documentation they need to fulfil the first steps of a new project

Hardware platforms:

- Imaging Evaluation Kit: IEK C64x, IEK C6211
- Digital Media Evaluation Kit: DMEK 6414, DMEK 642

Emulation:

- aDICE710

All trademarks property of their respective owner. ATEME may change product characteristics without prior notice.

© ATEME 2004 – ref ATE3080-COM1-1.3
All rights reserved



ATEME - 26 Burospace, route de Gisy - 91570 BIEVRES - FRANCE
Tel: 33 (0) 1.69.35.89.89 - Fax: 33 (0) 1.60.19.13.95

For more information, visit our website <http://www.ateme.com/products/> or contact our products team: products@ateme.com.