

# TeleObserver® 500

Remote Video Transmission via ISDN, PSTN (POTS), GSM

DResearch  
Digital Media Systems GmbH

Otto-Schmirgal-Straße 3 · D-10319 Berlin

Phone: +49 30 - 515 932 - 0

Fax: +49 30 - 515 932 - 299

e-mail: [contact@dresearch.de](mailto:contact@dresearch.de)

WWW <http://www.dresearch.de>

Managing Director Dr. Michael Weber

County court Berlin-Charlottenburg · HRB-Nr. 54412

Accounting details:

Dresdner Bank AG ·

Bank code number: 120 800 00

Account number 40 472 475 00



Whatever your personal or business interests concerning video transmission and surveillance are, we have the right answer for you with the TeleObserver product line.

Our TeleObserver 500 is a mobile, powerful and economical system for the transmission of video images via the cellular phone network.

Thus, live images can be transmitted world-wide from any place and any motion situation to a central station or a mobile reception station.

## System Structure

The TeleObserver TO500 has been designed for video transmission via the mobile phone network (GSM). The vehicle-adaptable device consists of 4 camera inputs and an audio input for optional extensions. To be able to carry out controlling functions, the TeleObserver is provided with a standardized serial interface with the aid of which cameras can be controlled or additional

devices from DResearch attached. The use of the most modern standardized compression method allows the transmission of up to 3 frames/s through the GSM network and up to 12 frames /s with an external modem via ISDN. The mounting rails integrated in the case allow an easy installation of the device in the place of operation. For the

operation of the TeleObserver a standard PC with a modem is required on the receiver side or, in case of higher mobility needs, a notebook with a GSM modem. The delivered receiver software must be installed in the computer in order to place a call to the TeleObserver or to receive video images from the place of operation in case of alarm.

## Areas of Application

The areas of application of the TeleObserver TO500 cover, among others:

- Installation in vehicles, e.g., for the documentation of cargo deliveries or condition of rails
- Surveillance in yachts, summer houses, mountain huts
- Undercover surveillance by detective offices, security services or public authorities
- Stationary installation in construction sites or in open cast mines for visual data transmission
- Catastrophe protection –Transmission of image data for later decisions

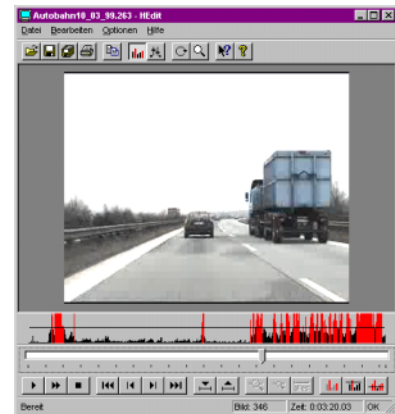


## Receiver Software

The Software supports the following features:

- Video transmission after contacting the sender
- Live camera switch and control
- Simultaneous representation of the images from up to four attached cameras.
- Automatic connection and transmission of post-alarm images in the event of an alarm detection by the sensor
- Acoustic and visual signal in the event of an alarm detection
- Automatic video recording at receiver side for later analysis
- Password-protected program settings of the system for alarm configuration
- Selection of different transmitter configurations
- Configuration of several senders
- Control of external, supplementary devices

## Video Player Software



The video player software offers varied analysis possibilities for the recorded video data. The following features are included:

- Display of histograms for a fast search of points of interest
- Export functions for BMP and AVI
- Magnifying function
- Loop replay of the videos

## Technical Specifications

Model	TeleObserver TO500
Video Input	4 BNC sockets: CVBS / PAL, NTSC
Resolution	Field (704 x 288 Pixel) CIF (352 x 288 Pixel) QCIF (176 x 144 Pixel) SQCIF (128 x 96 Pixel)
Video Transmission	Digitalization of the analog camera input signals, compression rates beginning at 9600 Bit/s, depending upon resolution and image quality Transmission of: 1-3 images/s via GSM 12 images/s via ISDN (external modem)
Compression Method	H.263+
Interfaces	1 x serial (RS-232 DSub9) 1 x audio (in/out RJ45)
Power Supply	12V, 1A
Size	105 mm x 139 mm x 34 mm (4.1 in x 5.5 in x 1.3 in)
Weight	400 g (14 oz.)
Software	Receiver software with storage and control functions (24h ca. 120 MB) Video analysis and export software

## Receiver-Side System Requirements

Processor	Pentium >400 MHz
Memory	64 Mbytes
Graphic Card	800 x 600, 65536 color
Operating System	Windows95/98/NT4/2000
Modem	GSM, analog or ISDN modem

## Delivery Set

TeleObserver TO500 with internal GSM modem (D-Net 900 MHz)

AC adapter

Receiver software

Video analysis and export software

Instruction manual

## Accessories (optional)

Sensor adapter for the implementation of an alarm input

Mounting rails for fixing at the wall

DetailExplorer (Software for the quality improvement of details in video images)

Relay Box (Device for the control of pan and tilt cameras, models with 8 relays)

VideoSwitch (Device for the connection of additional cameras)

Vehicle adapter

Modem cable and null-modem cable

GSM antenna

Audio function (Use of microphones for voice transmission)

